

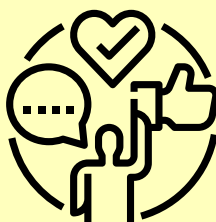


Choy, 1990

Other Behavioural Considerations

Passive Behaviours

In times of stress people may respond by doing nothing, pleasing others, becoming agitated or hostile.



Defence Mechanisms

A range of unconscious processes designed to avoid experiences of conflict or stress.

Projection

One person's feelings which can be projected onto someone else.

Parallel Process

When similar shared experiences make it hard to be objective.

Transference

Placing a mask of someone from our past on to a person in the present based on perceived similarities.

A Social Model of Communication

