



# **THE AND POWER OF LANGUAGE & NON-VIOLENT COMMUNICATION**

*Presented by Jerome Harvey-Agyei*





# The HEROES Approach



**H**heart

**E**fficient

**R**esponsive

**O**pen to learn

**E**mpathy

**S**ervice to others





**"CONNECTION BEFORE CORRECTION"**







# NON VIOLENT COMMUNICATION

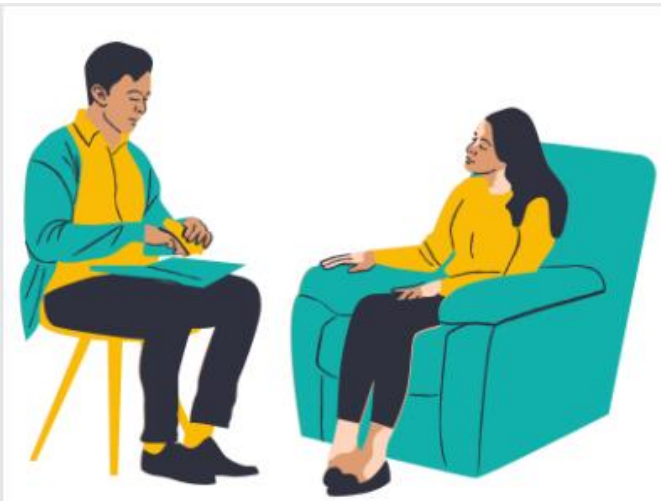
WE SPEAK LANGUAGE OF THE HEART.

## NO MORE;

- PUNISHMENT VS REWARD
- GOOD VS BAD
- RIGHT VS WRONG
- DIAGNOSIS
- EVALUATION
- JUDGEMENTS
- IF ITS NOT NATURAL WE ALL PAY FOR IT.
- HOW DO YOU TREAT PEOPLE, WHEN THEY DON'T DO WHAT YOU WANT THEM TO DO ?

- HOW DO WE CREATE THE QUALITY OF CONNECTION THAT GETS EVERYONES NEEDS MET ?
- HOW CAN WE MAKE LIFE WONDERFUL?
- HEAR WHATS ALIVE.
- ALL WE ARE EVER SAYING IS PLEASE AND THANK YOU.
- NEEDS NEED CLARITY AS WE MAY HAVE DIFFERENT PATHS TO MEET A SPECIFIC NEED I.E FOOD
- MAKE CLEAR WHAT WE WANT NOT WHAT WE DONT WANT.





YOU vs I





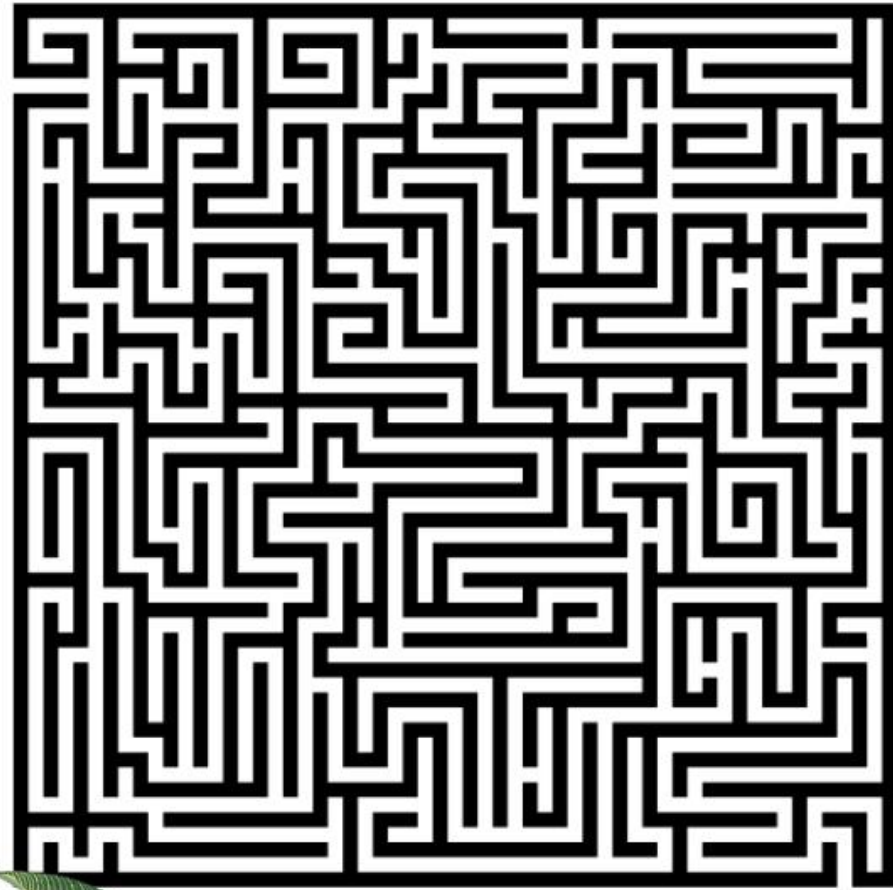


# Communicating **Boundaries**

While getting everyone **needs met**  
through **natural giving**



# The OBSTACLE GAME





# Who was Tope?



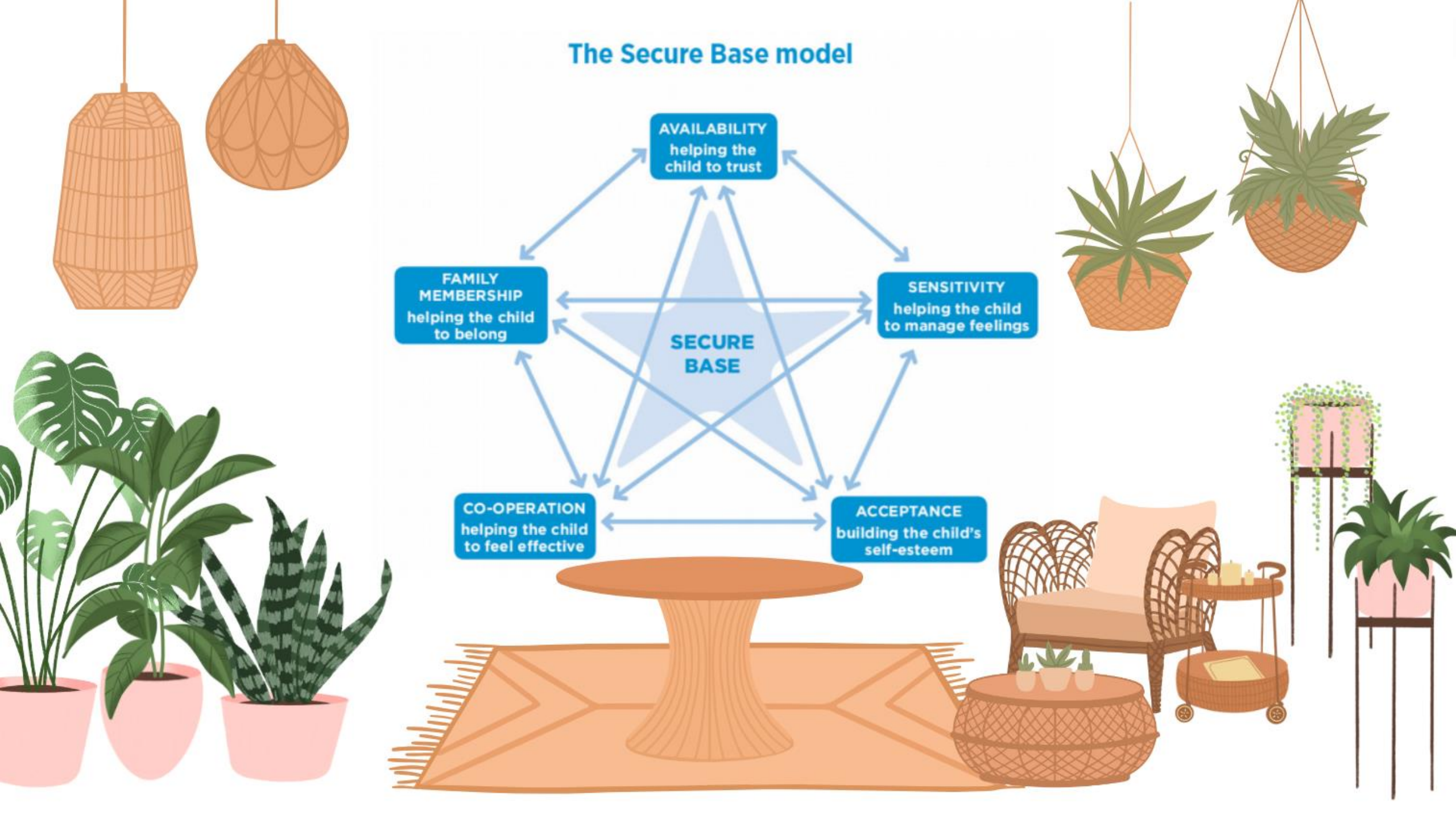
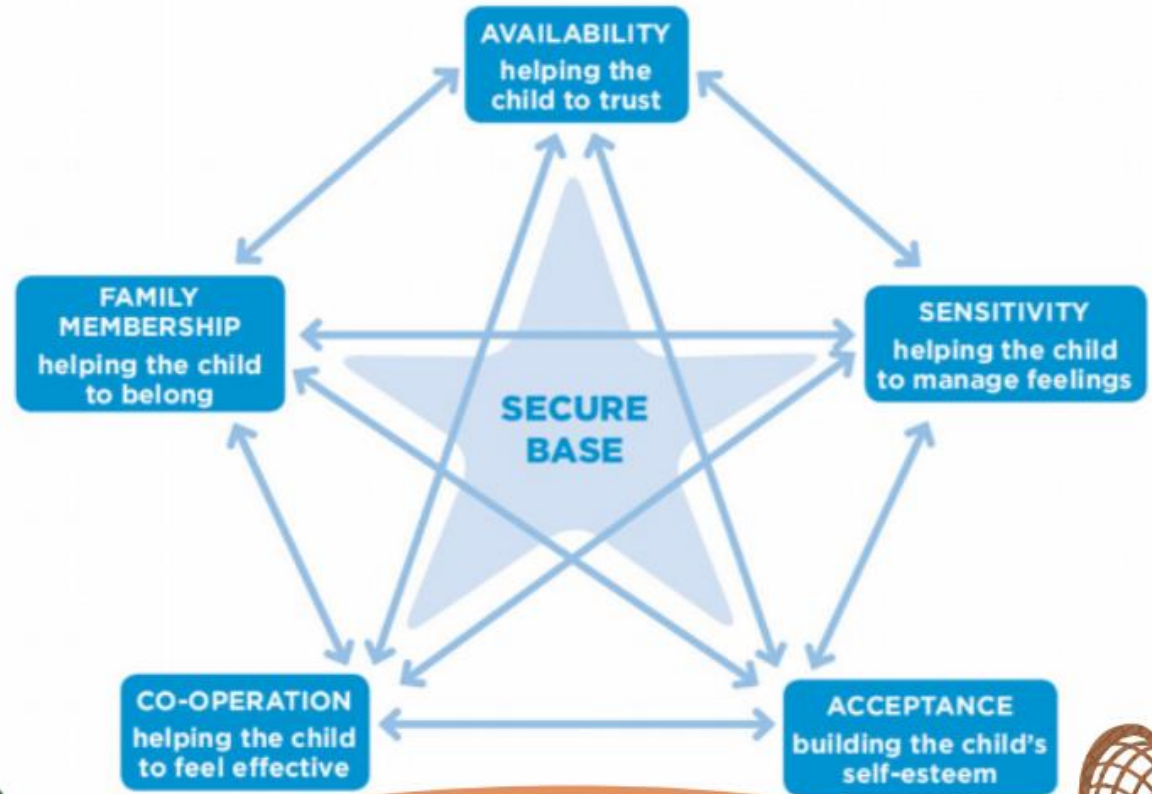


# VALUES GAME





# The Secure Base model

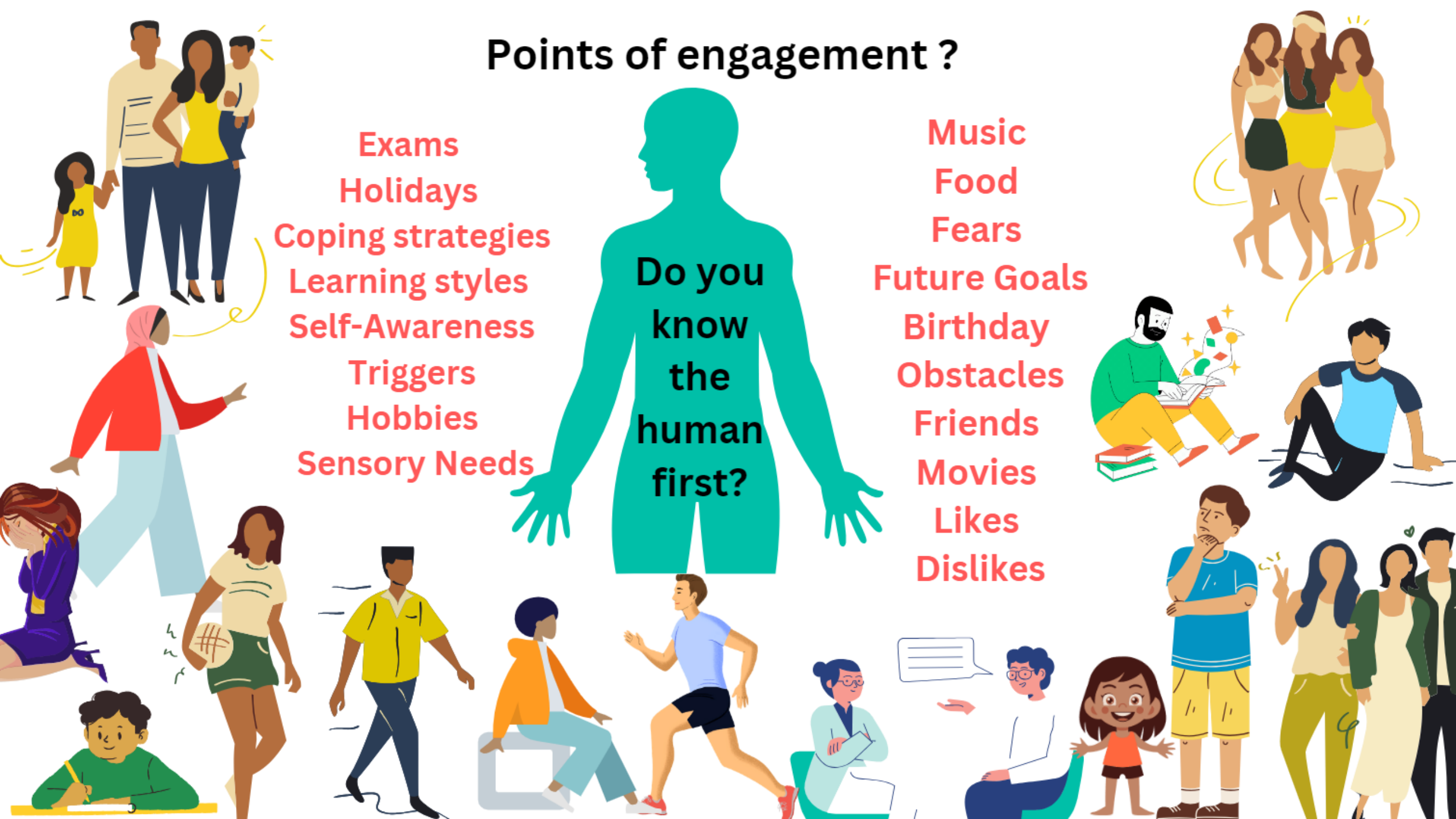


# Points of engagement ?

Exams  
Holidays  
Coping strategies  
Learning styles  
Self-Awareness  
Triggers  
Hobbies  
Sensory Needs

Music  
Food  
Fears  
Future Goals  
Birthday  
Obstacles  
Friends  
Movies  
Likes  
Dislikes

Do you  
know  
the  
human  
first?





**CONTACT US**

**THANK YOU FOR  
YOUR PRESENCE**



**[WWW.THETOPEPROJECT.CO.UK](http://WWW.THETOPEPROJECT.CO.UK)**



**[TheTopeProject@gmail.com](mailto:TheTopeProject@gmail.com)**



**THE TOPE  
PROJECT**